

Durata: ca 11 min.

Nevrištec

per Quartetto d'Archi

Peter Swinnen

2006

Moderato ♩ = 80

suoni reali

Violino 2

(*) col legno tratto

scordatura

4

8

13

17

IV^a III^a

(*) The dynamics are indicated by the size of the notes: the bigger the notehead, the louder it should be played.

21

III^a III^a II^a

25

II^a

28

III^a

31

III^a II^a

35

39

43

III^a

46

III^a

51

arco sul tasto L.H. half stopped

55

III^a

60

IV^a III^a

64

III^a

68

L.H. ordinario
flautando

71

75

79

II^a
III^a

83

IV^a

87

IV^a

92

95

99

IV^a

103

III^a

109

114

120

pizz. L.H. half stopped

III^a

126

130

II^a

134

137

III^a

141

146

arco ordinario
senza sordino

IIIª

151

IIª
IIIª

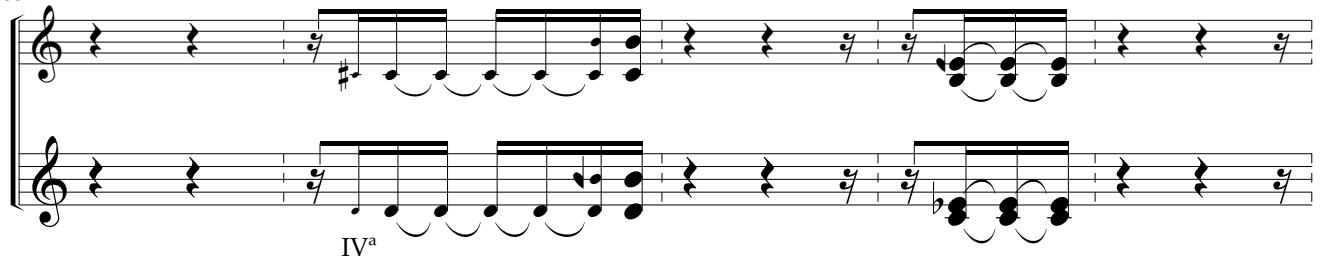
155

IIª

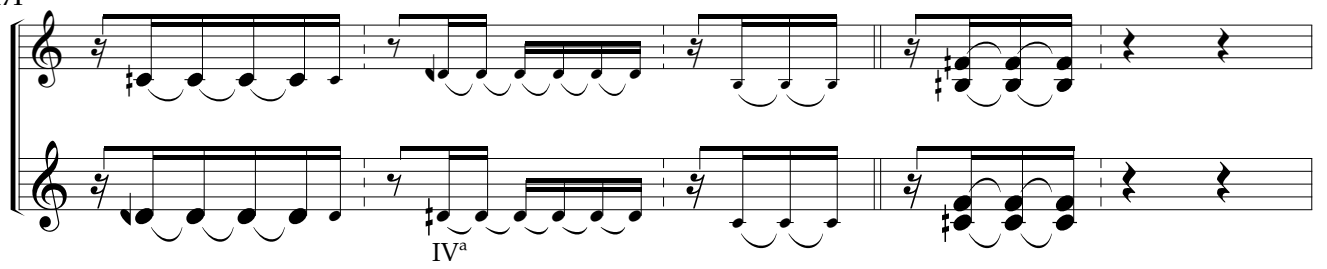
160

IIª
IIIª

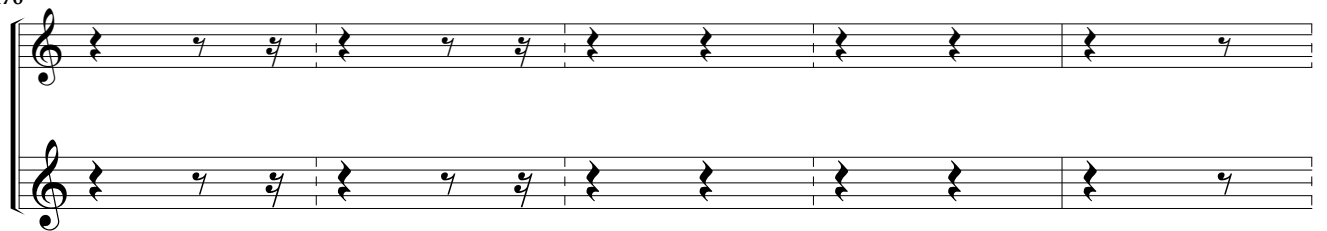
166



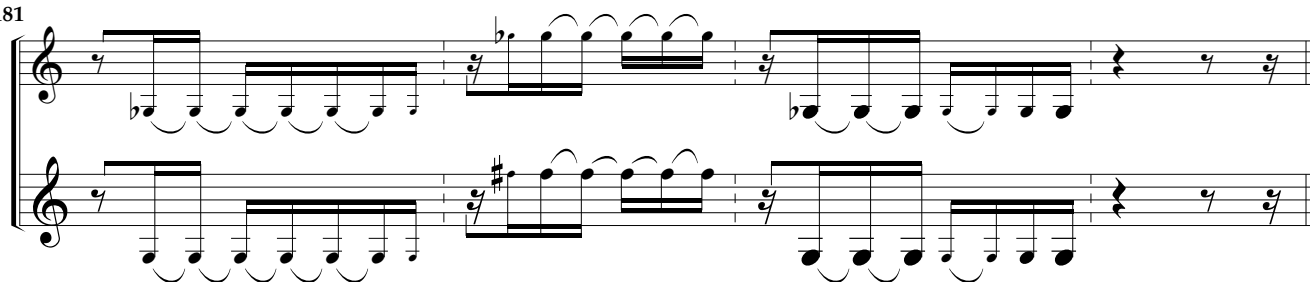
171



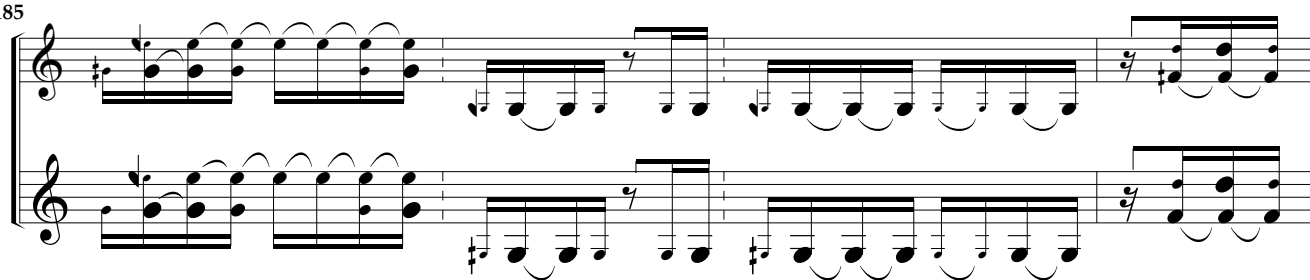
176



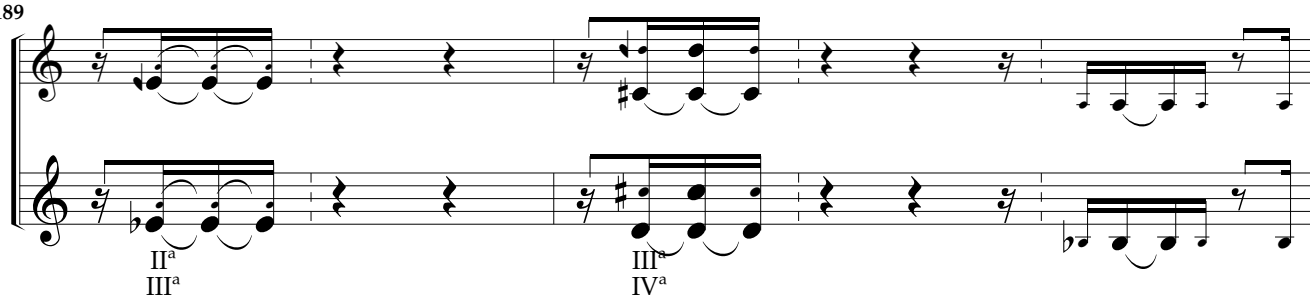
181



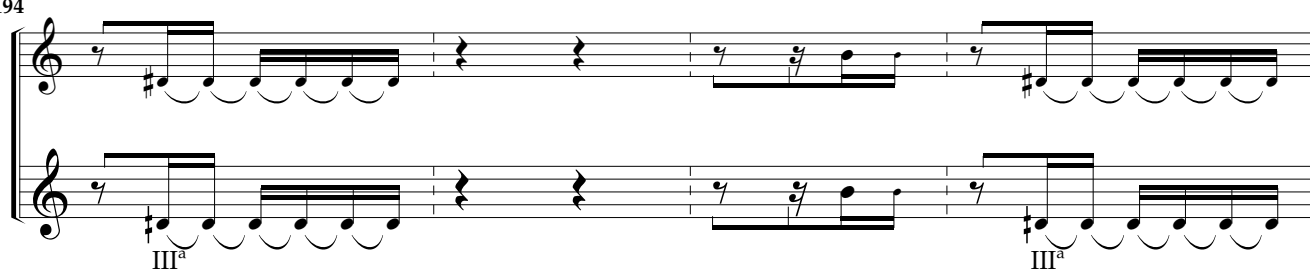
185



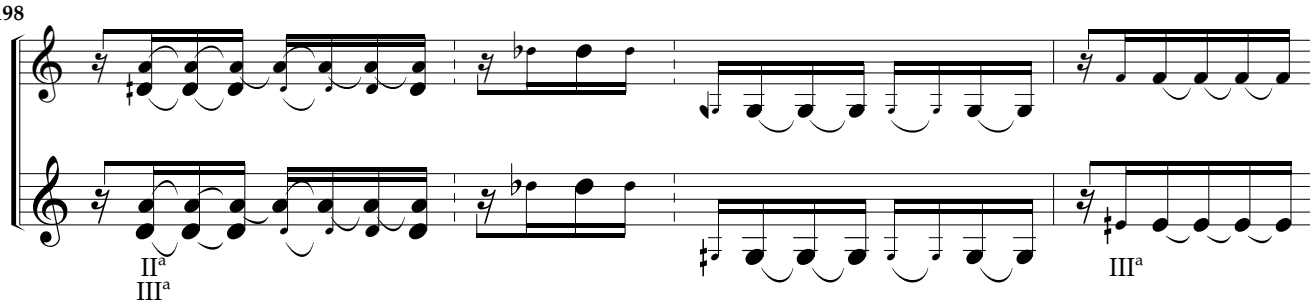
189



194



198



202



Allegro Vivace ♩ = 160

206

arco sul pont.

III^a

209

213

III^a

III^a

217

III^a

221

IV^a

226

III^a IV^a

230

IV^a II^a

233

III^a III^a

238

IV^a III^a

244

III^a

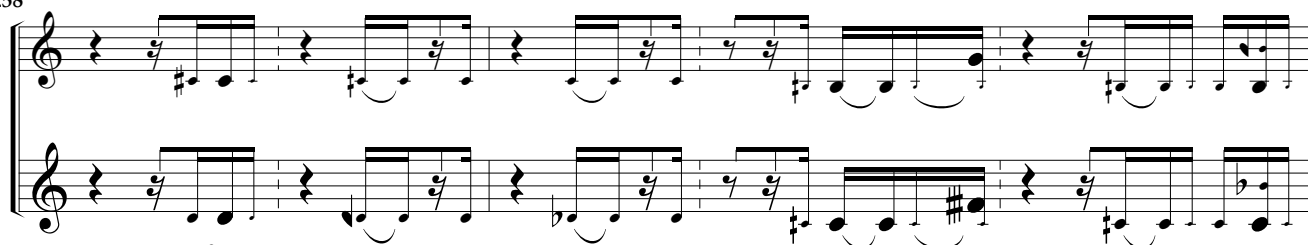
249

III^a

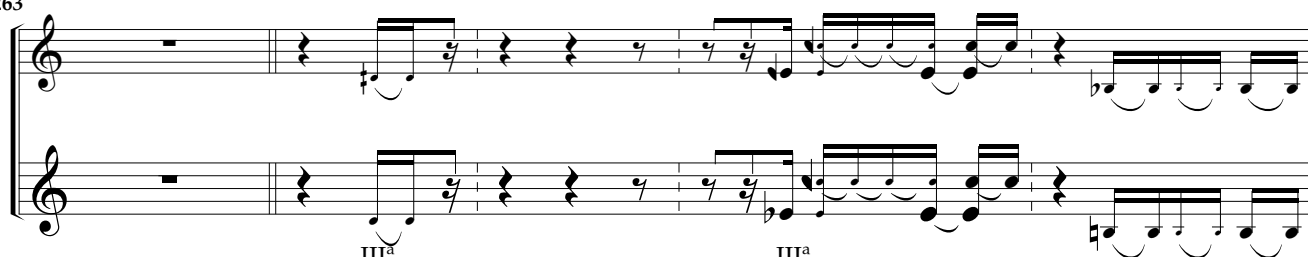
254

III^a II^a

258

IV^a

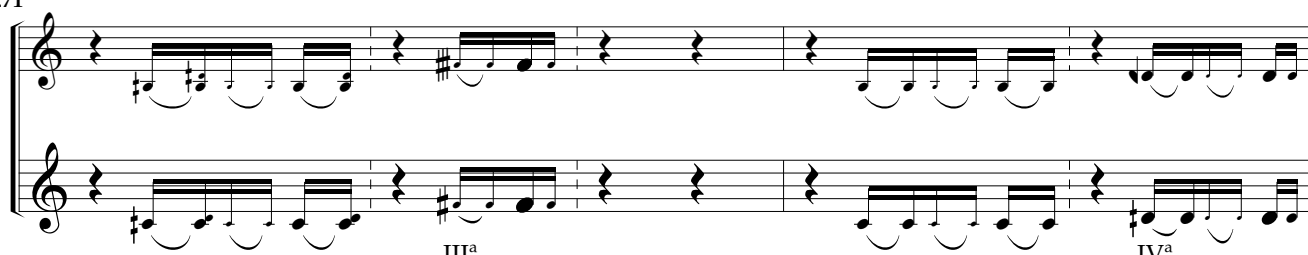
263

III^aIII^a

268

III^aII^a

271

III^aIV^a

276

III^aIII^a

280



pizz. sul pont.

IV^aIII^aIV^a

Névrís'tec * V2 * pg 13

285

arco *sul pont.*

IV^a III^a

289

pizz. *sul pont.*

III^a

293

III^a IV^a

298

III^a III^a

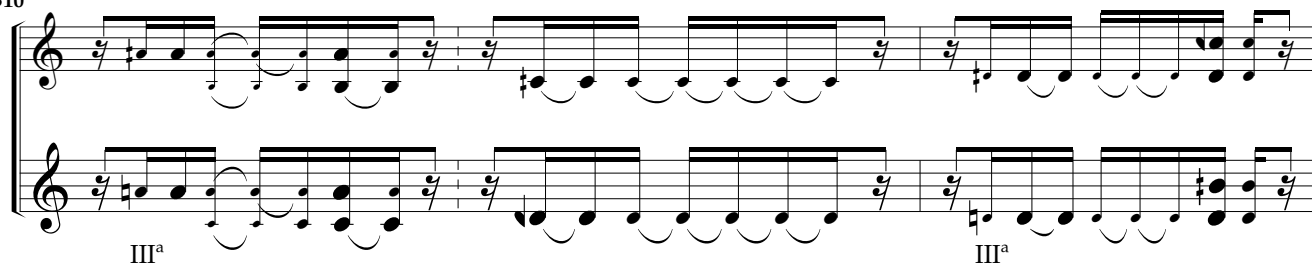
302

III^a III^a

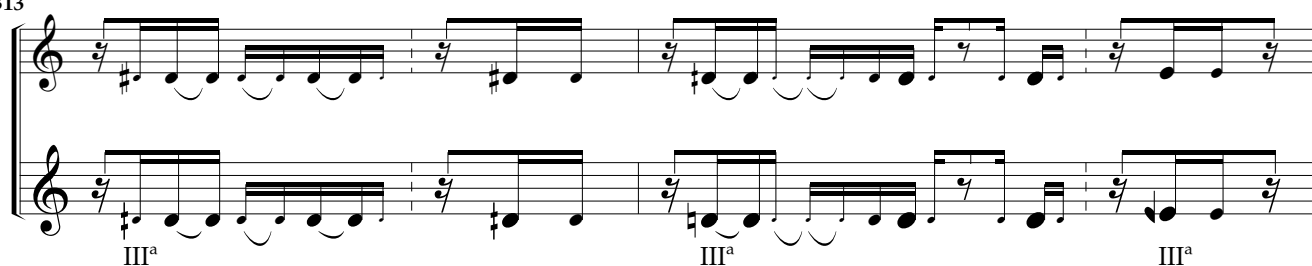
307

col legno battuto

310



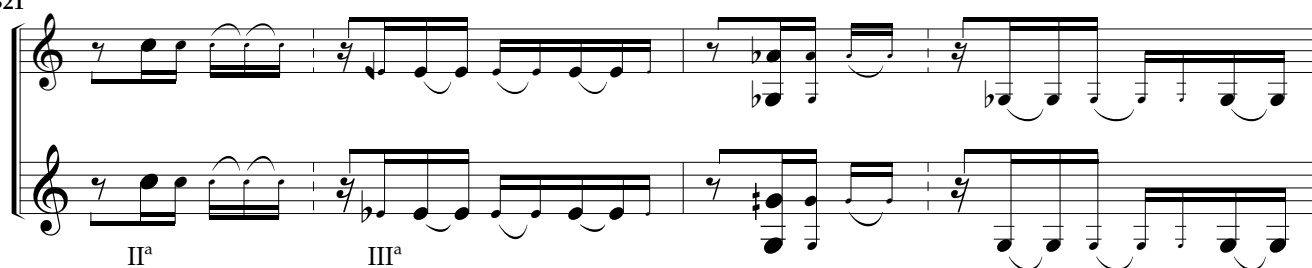
313



317



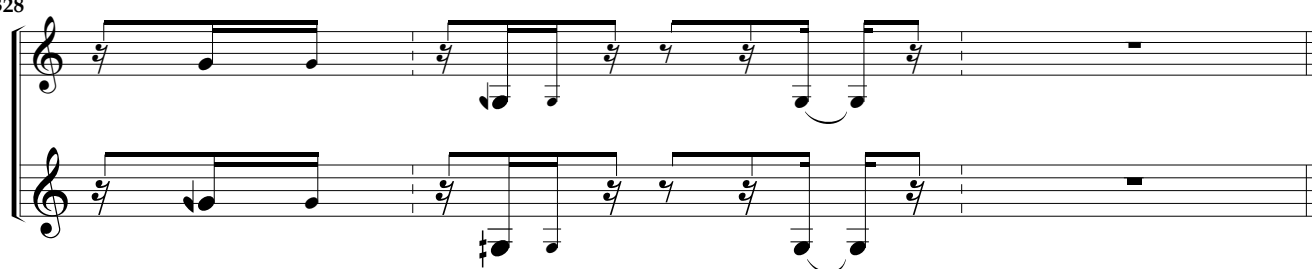
321



325



328



331

arco sul tasto L.F. half stopped

III^a

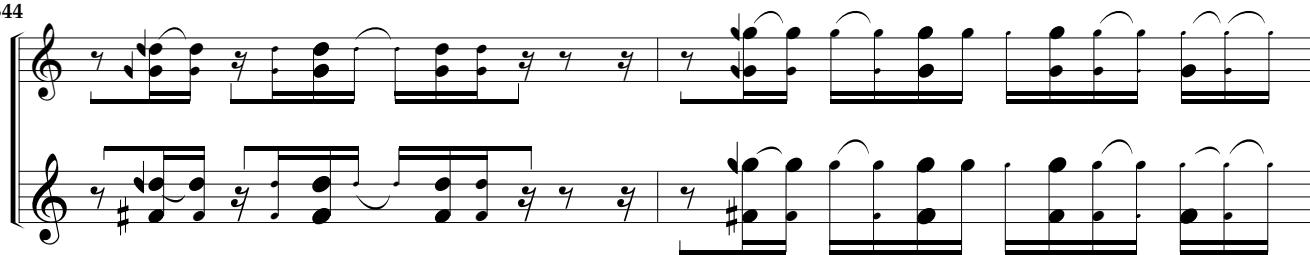
333

335

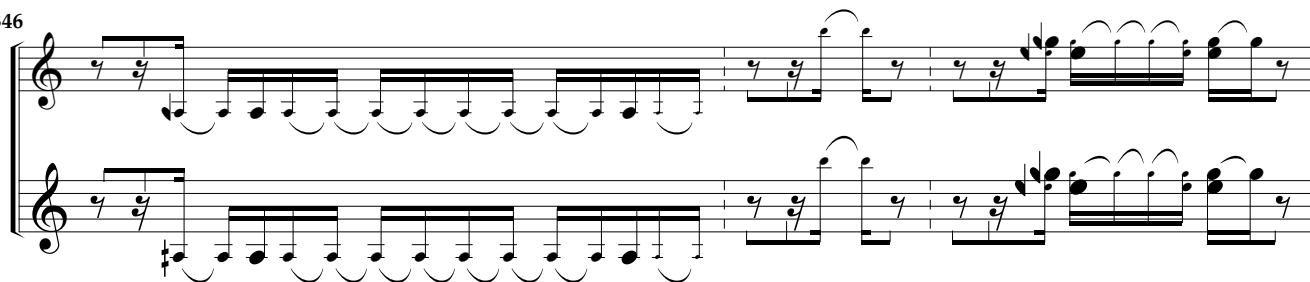
338

341

344



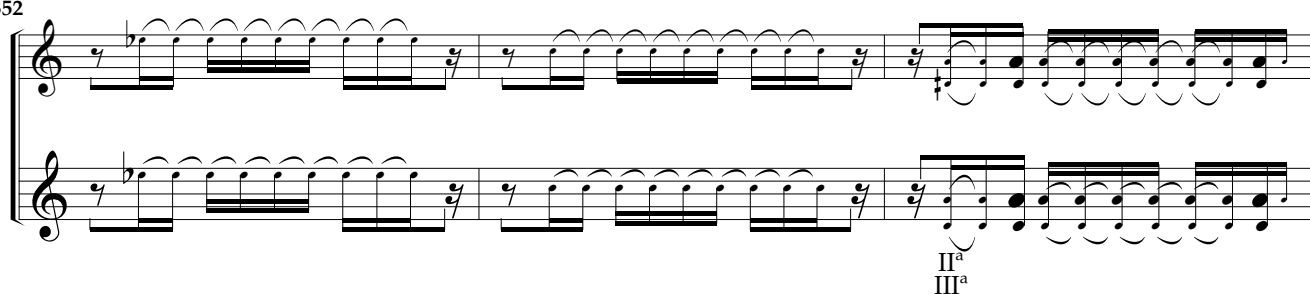
346



349



352



355



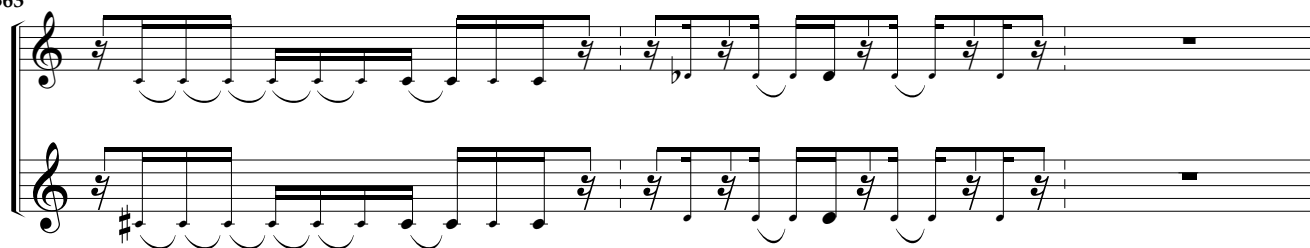
357



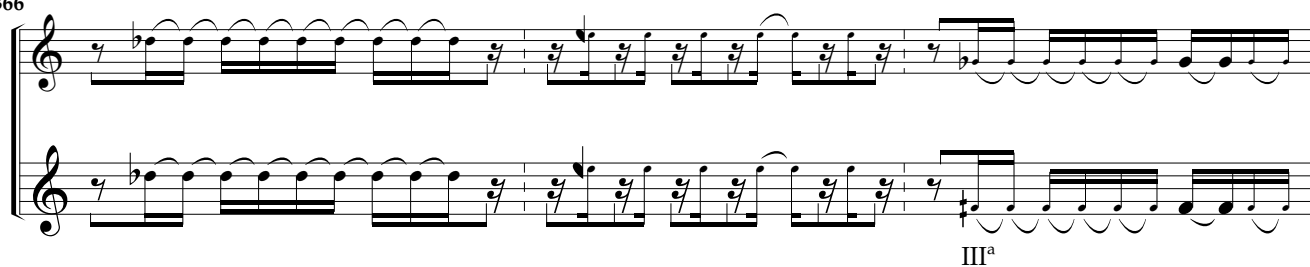
360



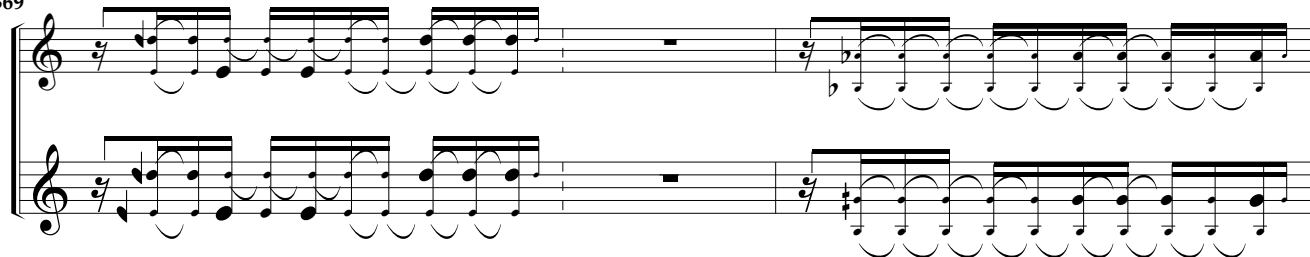
363



366



369



372

